

2022 CLASS A GAS BOUNDER

FLEETWOOD RV
MODELS: 33C | 35GL NEW | 35K | 36F



Bounder 33C
 Shown in Frosted Merlot Graphics

CHASSIS | ENGINE | TIRES

- Ford® Chassis
 7.3L, 350HP Engine | 468 lb/ft Torque w/6 Speed Torq-Shift® Automatic Transmission w/Overdrive & Tow/Haul Mode
- Power Platform
- Electronic Instrument Panel
- Auto Head Lights
- Standard Traction Control
- 4-Point Fully Automatic Hydraulic Leveling Jacks
- Tow Hitch Rating 5,000# - 8,000#
- Chassis Frame: Ladder Type, Single Channel 36,000psi - 50,000psi Steel, E-Coated

CHASSIS & TIRE SIZES

33C	22K CHASSIS	235/80R 22.5" TIRES
35GL	26K CHASSIS	255/80R 22.5" TIRES
35K	22K CHASSIS	235/80R 22.5" TIRES
36F	26K CHASSIS	255/80R 22.5" TIRES

EXTERIOR

- Aerodynamic Front Cap w/Hood & Automotive Headlights
- Automotive, Bonded, One Piece Windshield
- Remote Power Heated Mirrors w/Turn Indicators, Side Cameras
- Power Entry Step w/Light
- Pass Through Storage
- Exterior Entertainment LED TV w/Bluetooth® Soundbar
- 100w Solar Panel
- Surge Protection
- 2000W Inverter
- 50 Amp Service /Whole House EMS
- 5.5kW Onan Generator w/Auto Gen Start
- Dual 15M BTU AC's w/Chill Grill and Rear Heat Pump
- Bus-Style, Side Swing, Aluminum Luggage Doors
- Unidirectional King Controls Jack Antenna
- Premier Full Body Paint

- One Piece Fiberglass Wall w/No Luan Backer
- MultiPlex Wiring Control System w/Mobile App

INTERIOR

- Digital Dash, Low Engine Cover and Center Console
- Residential at Feature Wall & Refreshed Window Treatments
- Automotive Style Dash w/Dual Monitors & Workstation
- Dash Stereo w/CarPlay®/Android Auto & Front Speakers
- Residential Refrigerator French Door w/Icemaker
- Hand Laid Tarkett® Composite Tile Flooring
- Electric Fireplace at Feature Wall (NA 35GL)
- Solid Surface Galley Counters & Sink Covers
- Multiple Power Ceiling Vent Fans
- Fiberglass Shower, Glass Door & Skylight
- King Bed
- CPAP Storage Ready Above Master Bed
- Easy Hose Access with a 110 Volt Electrical Outlet for Power and an Automatic Night Light Inside the Cabinetry
- WiFiRanger™Sky4

OPTIONS

- SumoSprings® — Front & Rear
- Liquid Spring® Suspension — Front/Rear
- KING Universal Satellite System
- Steering Stabilizer
- Garmin™ Collision Mitigation
- Three Burner Drop In Range with Oven
- Washer/Dryer All-In-One-Combo (35GL)
- Manual Theater Seating
- Rest EZ Dinette (35GL)
- Hide-A-Loft™ Electric Drop Down Bed
- Free Standing Dinette w/Credenza (33C, 35K)
- Upgraded WiFi Ranger™ Sky4ProPack w/LTE
- 300w Solar Panel
- Power Shore Cord Reel

LA MESA RV
 EXPERIENCE LIFE
 www.lamesarv.com
 800-496-8778

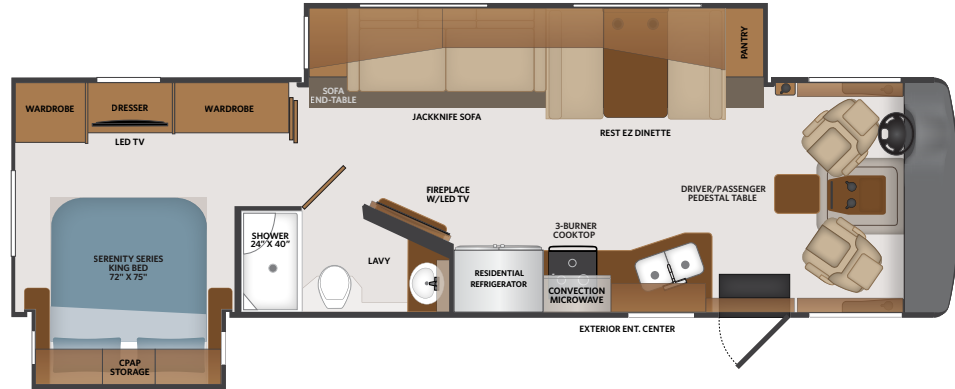
33C | 35GL NEW | 35K | 36F

Options: 089, 096, 113, 126, 194, 220, 304, 435, 470, 471, 472, 580, 671, 833

TOP FLOORPLAN FEATURES

33C

1. Sleeps up to 6
2. Open Living Area
3. Dual Dash Monitors
4. Fiberglass Shower w/Skylight
5. 2000W Inverter
6. Full Body Paint



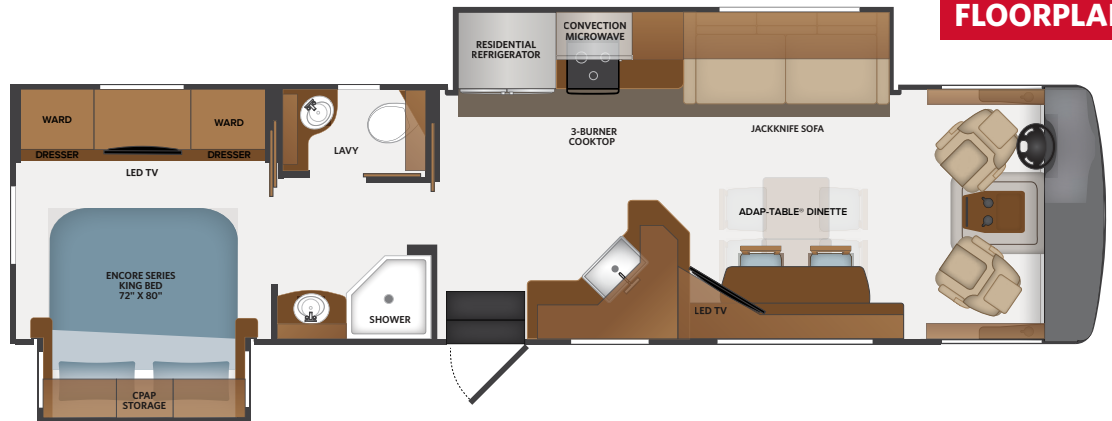
Options: 089, 096, 113, 130, 194, 209, 220, 304, 333, 435, 470, 471, 472, 580, 830

TOP FLOORPLAN FEATURES

35GL

1. Sleeps up to 6
2. Adap-table® Dinette and Breakfast Bar
3. Private Master Suite
4. Open Kitchen Concept
5. His and Hers Full Length Ward w/Six Drawer Dresser
6. Sleeper Sofa Allowing Alternative Sleep Accomodations
7. Unique Lavy Design Offering Seperate Functional Spaces

NEW FLOORPLAN



BOUNDER OPTIONS

089	Upgraded WiFi Ranger™ Sky4ProPack w/LTE	220	Hide-A-Loft™ Electric Drop Down Bed	580	Collision Mitigation
096	KING® Universal Satellite System	304	Solar Electrical Panel (300w)	671	Manual Power Shore Cord Reel
109	Truma Tankless Water Heater	435	Ford® CSA Package	830	Rest EZ Dinette
113	Range -3 Burner Drop-in w/Oven	470	SumoSprings® - Front/Rear	833	Free Standing Dinette w/Credenza (33C, 35K)
126	Washer/Dryer — All-In-One Combo	471	Steering Stabilizer System		
194	Manual Theater Seating	472	Liquid Spring® Suspension — Front/Rear		

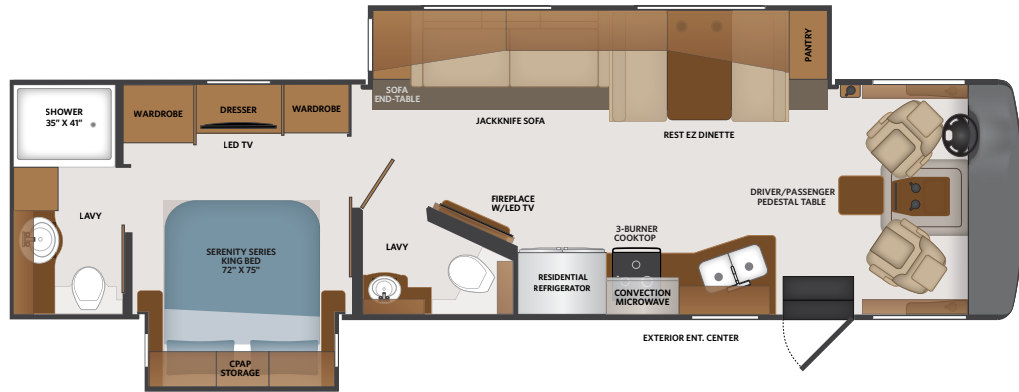
33C | 35GL NEW | 35K | 36F

Options: 089, 096, 113, 126, 194, 220, 304, 435, 470, 471, 472, 580, 671, 833

TOP FLOORPLAN FEATURES

35K

1. Bath-and-a-Half
2. Sleeps up to 6
3. The Bounder Story
4. Residential Refrigerator w/French Door and Icemaker
5. Power Entry Step
6. Bus-style Luggage Doors

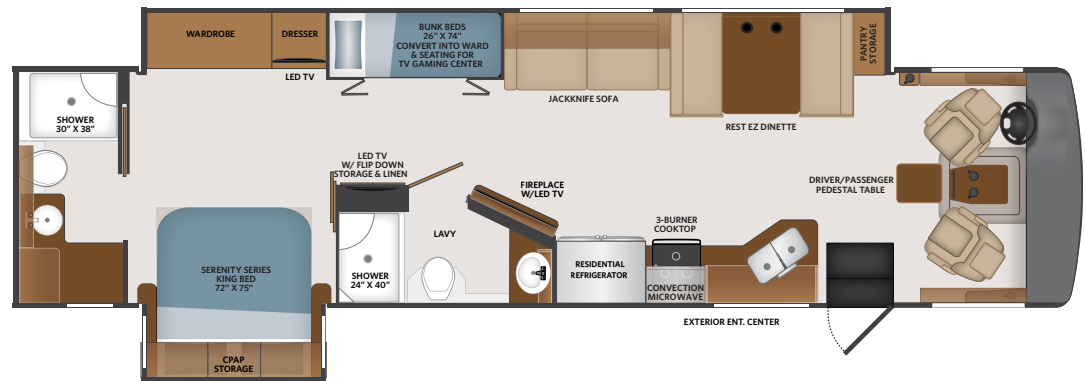


Options: 089, 096, 109, 113, 126, 194, 220, 304, 435, 470, 471, 472, 580, 671

TOP FLOORPLAN FEATURES

36F

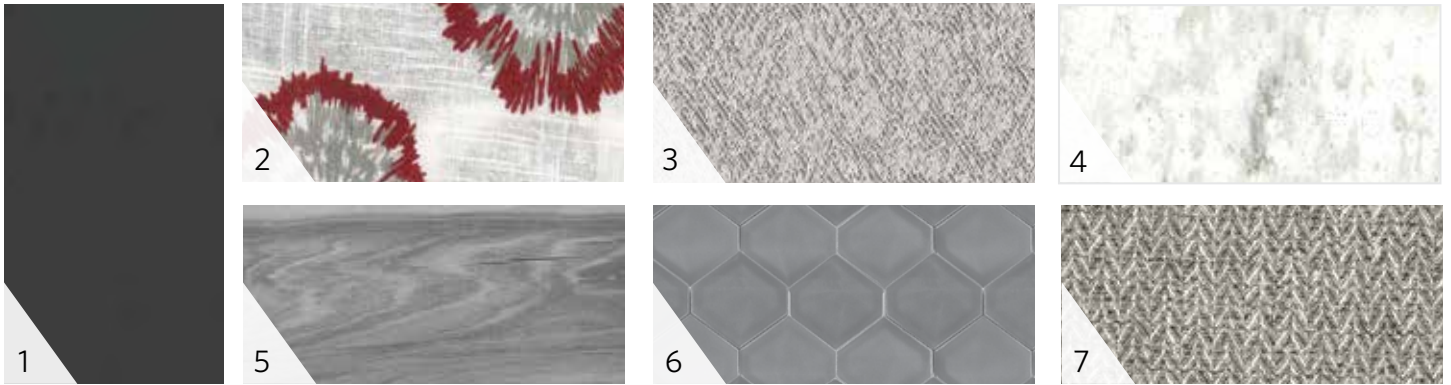
1. Sleeps up to 7
2. Two Full Baths
3. Bunk Beds that Convert into a Large Wardrobe Storage
4. Surge Protection
5. Tarkett® Flooring
6. Electric Fireplace at Feature Wall
7. 26,000# Chassis
8. Girard® Tankless Water Heater



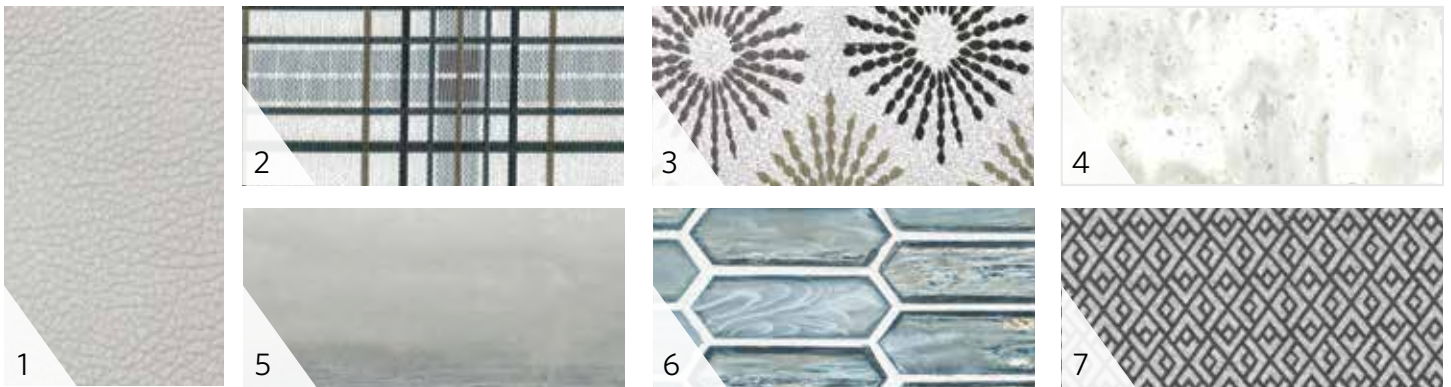
**BOUNDER
OPTIONS**

089	Upgraded WiFi Ranger™ Sky4ProPack w/LTE	220	Hide-A-Loft™ Electric Drop Down Bed	580	Collision Mitigation
096	KING® Universal Satellite System	304	Solar Electrical Panel (300w)	671	Manual Power Shore Cord Reel
109	Truma Tankless Water Heater	435	Ford® CSA Package	830	Rest EZ Dinette
113	Range -3 Burner Drop-in w/Oven	470	SumoSprings® - Front/Rear	833	Free Standing Dinette w/Credenza (33C, 35K)
126	Washer/Dryer — All-In-One Combo	471	Steering Stabilizer System		
194	Manual Theater Seating	472	Liquid Spring® Suspension — Front/Rear		

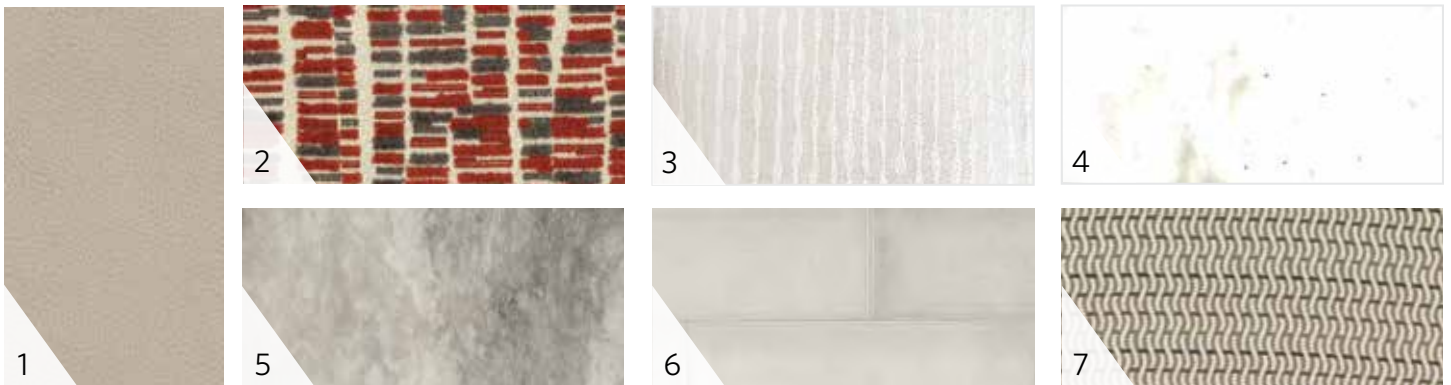
INTRIGUE



QUICKSILVER



SYCAMORE



- | | | | |
|-----------------|--------------|--------------|-----------|
| 1 SOFA | 3 BEDDING | 5 FLOORING | 7 VALANCE |
| 2 LIVING ACCENT | 4 COUNTERTOP | 6 BACKSPLASH | |



ENGLISH CHESTNUT



GREYSTONE



HERITAGE
 (PAINTED CABINETRY)



WINTER FOG
 (PAINTED W/GLAZED ACCENTS CABINETRY)

20
22

CLASS A GAS

BOUNDER GRAPHICS

FLEETWOOD RV

FleetwoodRV.com

Premium Four Color, Full Body Paint



BLUE MERLE



CINNABERRY



FREEDOM



FROSTED MERLOT

2022 CLASS A GAS BOUNDER SPECIFICATIONS



fleetwoodrv.com

CHASSIS	33C	35GL - NEW	35K	36F
Wheelbase (inches)	208"	242"	228"	242"
Front GAWR (lbs)	8,000	9,000	8,000	9,000
Rear GAWR (lbs)	15,000	17,500	15,000	17,500
GCWR (lbs)	26,000	30,000	26,000	30,000
GVWR (lbs)	22,000	26,000	22,000	26,000
Hitch Rating Weight (lbs)	5,000	8,000	5,000	8,000
Tongue Weight (lbs)	500	800	500	800
Fuel Capacity (gal)	80	80	80	80

DIMENSIONS AND CAPACITIES	33C	35GL - NEW	35K	36F
Overall Length (inches)	34' 3"	36' 3"	36' 3"	38' 9"
Overall Height (with A/C)	12' 10"	12' 10"	12' 10"	12' 10"
Overall Width (maximum)	102"	102"	102"	102"
Interior Height (maximum)	84"	84"	84"	84"
Interior Width (maximum)	96"	96"	96"	96"
Patio Awning Width (ft./in.)	17' 0"	17' 0"	17' 0"	17' 0"
Interior Storage (cu. ft.)	123	155	126	171
Exterior Storage (cu. ft.)	160	180	180	170
Fresh Water Holding Tank (gal)	100	100	100	100
Grey Water Holding Tank (gal)	58	58	58	90
Black Water Holding Tank (gal)	42	42	42	50
Appliance Propane Tank (gal) (WC)	25	25	25	25
Water Heater Tank (gal)	10	10	10	TANKLESS

FORD® CHASSIS

Model: Ford®

Engine: 7.3L Triton V8

Transmission: Ford® 6-Speed, Automatic w/Overdrive

Alternator: 175 Amp

Torque: 468 lb.-ft. @ 3,000 RPM

Horsepower: 350HP @ 3,900 RPM



All 2022 REV Recreation Group motorhomes include a limited one year/15,000-mile coach warranty and three-year/45,000-mile structural warranty, whichever occurs first, and is fully transferable for the first 12 months.

Product information, photography and illustrations included in this publication were as accurate as possible at the time of printing. For further product information and changes, please visit our website at www.fleetwoodrv.com or contact your local Fleetwood dealer. Prices, materials, design and specifications are subject to change without notice. All weights, fuel, liquid capacities and dimensions are approximate. Fleetwood RV has designed its recreational vehicles to provide a variety of uses for its customers. Each vehicle features optimal seating, sleeping, storage and fluid capacities. The user is responsible for selecting the proper combination of loads (i.e., occupants, equipment, fluids cargo, etc.) to ensure that the vehicle's capacities are not exceeded.



MODEL: BOUNDER ©2021 REV Group Inc. Printed in USA. Model Year 2022. 10/2021